

TOPOGRAPHIC SURVEY

by
ANDREW SPIEWAK LAND SURVEYOR, INC.
of

SPIEWAK CONSULTING
PROFESSIONAL DESIGN FIRM
5805 W. HESKINS AVE., CHICAGO, IL 60630
PHONE: (773) 751-4400
WWW.SPIEWAKCONSULTING.COM
470 SHAGBARK CT., ROSSELLE, IL 60543
PHONE: (708) 292-8888
andrew@spiewakconsulting.com

SPIEWAK CONSULTING
THIS DOCUMENT IS INSTRUMENT
OF PROFESSIONAL SERVICE, PROPERTY
OF THE COMPANY AND IS THE
PROPERTY OF THE COMPANY. IT IS TO
BE REPRODUCED WITHOUT
WRITING PERMISSION OF THE
COPYRIGHT OWNER.

GENERAL NOTES
1. THE LOCATION OF UNDERGROUND
UTILITIES SHOWN HEREON IS BASED
ON ABOVE-GROUND EVIDENCE ONLY. THE
SURVEYOR MAKES NO GUARANTEE THAT
THESE UTILITIES ARE ACCURATELY
LOCATED. COMPARE ALL SUCH UTILITIES IN THE
AREA WITH THE MOST RECENT
APPROVED:
2. IN CASES OF DOUBT AS TO
APPROXIMATE LOCATION OF UTILITIES,
REFER TO THE CITY OF CHICAGO
NOT RELATED TO THIS DRAWING OR
SCALE.

CALL J.E.E. TOLL FREE
1 (800) 892-0123
OPERATES 24 HOURS A
DAY 365 DAYS A YEAR

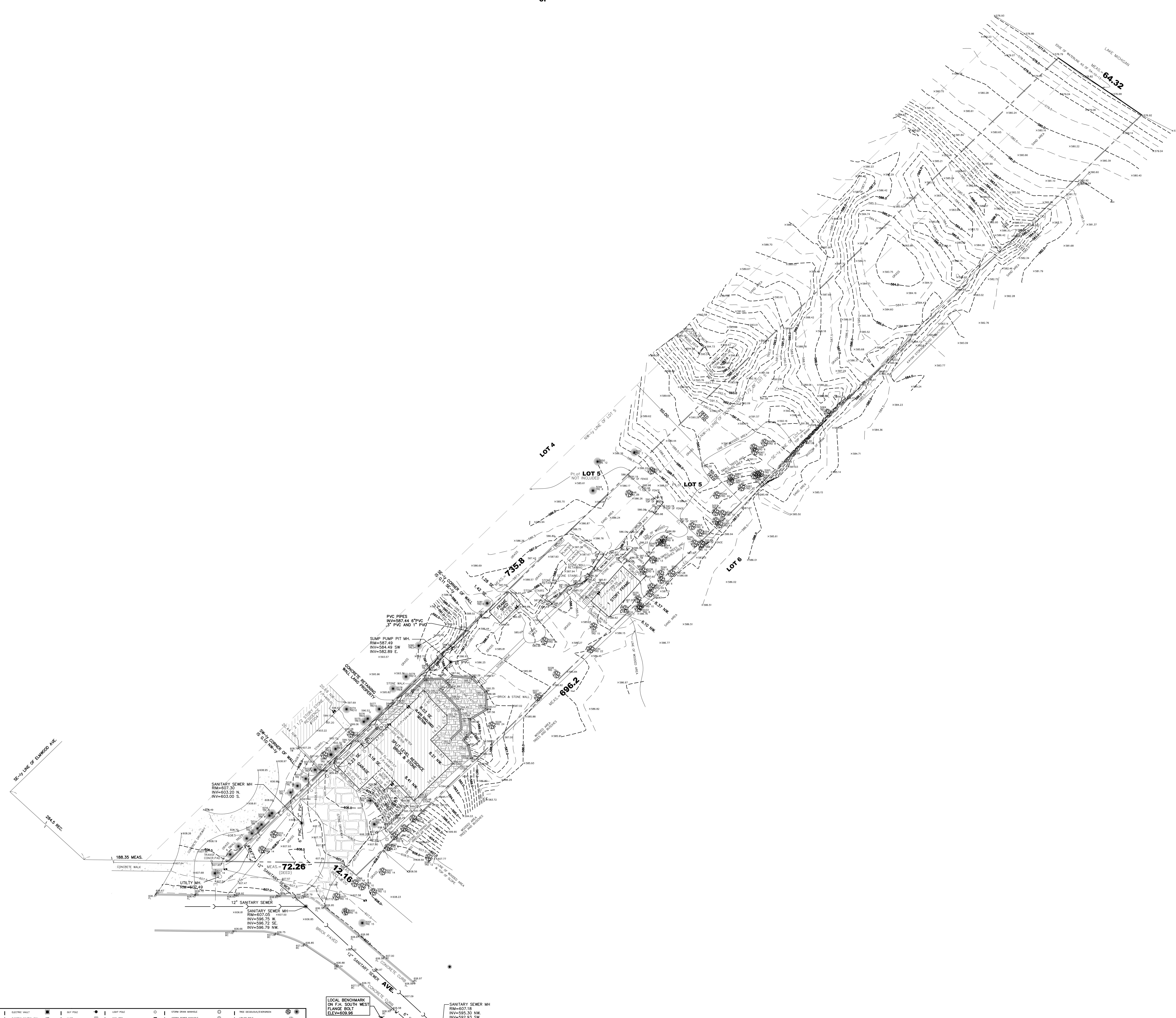
WARNING

CALL BEFORE YOU DIG
1 (800) 892-0123
48 HOURS BEFORE YOU DIG

FOR CLARIFICATION NOT ALL TIES
ARE SHOWN. SEE PLAT OF SURVEY
FOR ALL TIES.
TREE TAGS
ON MAP TREES NUMBERS ARE FROM 5000
IN THE FIELD TAG ON TREES ARE NUMBERED
ONLY TO TENS
EXAMPLES: MAP 5003 IN FIELD TAG 23
MAP 5007 IN FIELD TAG 7
BENCHMARK:
LOCATION: EASTERN SIDE OF VILLAGE HALL IN WILMETTE, IL
22' NORTH OF "I" IN ENGRAVED BRICK LABELED "C14",
101.4' SOUTH OF CENTERLINE OF CENTRAL AVE., 30.9'
NORTHWEST OF CENTER OF NORTH FLAGPOLE.
ELEVATION=614.87
GENERAL NOTES:
1. THE LOCATION OF UNDERGROUND UTILITIES SHOWN HEREON IS
BASED ONLY ON ABOVE-GROUND EVIDENCE. TOGETHER WITH
EVIDENCE FROM PLANS OBTAINED FROM UTILITY COMPANIES OR
PROVIDED BY CLIENT, AND MARKINGS BY UTILITY COMPANIES AND
OTHER APPROPRIATE SOURCES, IF NOTED HEREON.
THE SURVEYOR MAKES NO GUARANTEE THAT THE UNDERGROUND
UTILITIES SHOWN COMPRISE ALL SUCH UTILITIES IN THE AREA, EITHER
IN SERVICE OR ABANDONED.

LEGEND

○ = CURB	□ = MARKED	○ = UTILITY	○ = UTILITY
□ = CURB LINE	○ = NORTH FACE	○ = UTILITY PALE	○ = UTILITY PALE
□ = CURB LINE	○ = SOUTHWEST CORNER	○ = UTILITY PALE	○ = UTILITY PALE
○ = SIDE WALK	○ = POINT	○ = UTILITY PALE	○ = UTILITY PALE
○ = SIDE WALK	○ = POINT	○ = UTILITY PALE	○ = UTILITY PALE
○ = SIDE OF PARAPET	○ = POINT	○ = UTILITY PALE	○ = UTILITY PALE
○ = SIDE OF PARAPET	○ = POINT	○ = UTILITY PALE	○ = UTILITY PALE
○ = SIDE OF PARAPET	○ = POINT	○ = UTILITY PALE	○ = UTILITY PALE
○ = SIDE OF PARAPET	○ = POINT	○ = UTILITY PALE	○ = UTILITY PALE
○ = SIDE OF PARAPET	○ = POINT	○ = UTILITY PALE	○ = UTILITY PALE



DRAWING REVISIONS

NO.	DATE	DESCRIPTION

TOPOGRAPHIC SURVEY
ORDERED BY:
CHICAGO IL 60604
DRAWN BY:
REVIEWED BY:
ORDER NO.:
SCALE: 1" = 20'
DATE: AUG 15 2023
SHEET NO.: